

- * One of the most convenient hotel for Nikko sight-seeing.
- * Traditional Japanese foods for dinner and breakfast.



Standard Japanese style guestroom with calm interior.

Standard Japanese style guestroom with calm interior.

Washbasin, Rest room, Television, Telephone, Refrigerator, Safe box, Japanese tea set, YUKATA(Japanese bath robe), Face towel, Bath towel, Tooth brush and paste.



Western style room



"Taisho Roman"

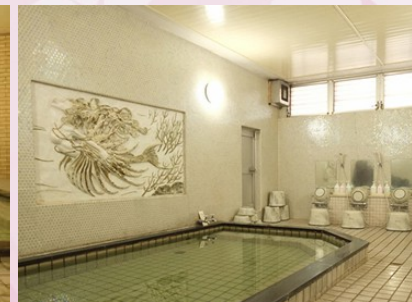


Woodblock of Sumio Kawakami

ONSEN(grand public bath) "Spa"



Clear simple Alkaline spring, rather soft even for sensitive skin.



Souvenir shop



Coffee lounge



Example of the basic dinner course.



We will serve you the traditional Japanese cuisine, includes Yuba which is a traditional nutritious food innovated by vegetarian monk.

Breakfast is also the Japanese style.



Dried soymilk skin "Yuba"

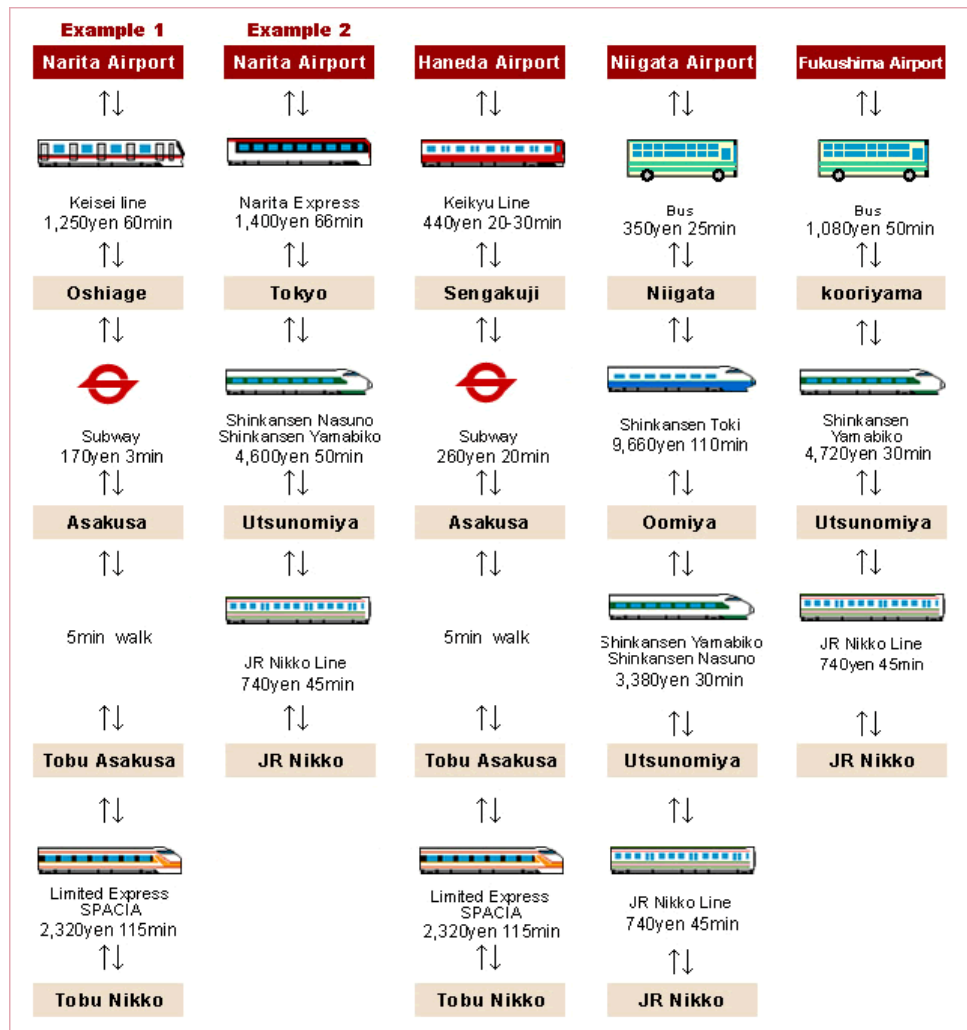


Tochigi Beef



《Access guide》

- * JR Tokyo >>> JR Utsunomiya >>> JR Nikko (1h30m)
- * JR Nikko >>> Hotel harumoto (1min on foot from Sougoukaikan-mae bus stop, 6min by bus from Nikko station, or 5min by taxi from JR Nikko station)
- * Tobu Asakusa sta. >>> Tobu Nikko (1h40m)
- * Tobu Nikko >>> Hotel Harumoto (1min on foot from Sougoukaikan-mae bus stop, 6min by bus from Nikko station, or 5min by taxi from JR Nikko station)
- * Metropolitan expressway(Kawaguchi Jct) >>> Utsunomiya I.C (Tohoku expressway 1h30m) >>> Nikko I.C (Utsunomiya-Nikko toll road 20min)
- * Nikko I.C日光I.C >>> Hotel Harumoto (5min)



HOTEL HARUMOTO Accommodation charges

【Personal trip】One person's accommodation charges ※Supper and breakfast are included.

Calendar	Period	Basic charge	including tax(8%)	Bath tax	Total
4/1 ~ 7/31 (2014)	Man~Thu	10,000yen	800yen	150yen	10,950yen
8/1 ~ 11/30 (2014)	Man~Thu	11,000yen	880yen	150yen	12,030yen
12/1 ~ 12/25 (2014)	Man~Thu	9,000yen	720yen	150yen	9,870yen
1/4 ~ 3/31 (2015)	Man~Thu	9,000yen	720yen	150yen	9,870yen
5/2 ~ 5/5 8/10 ~ 8/17 12/30 ~ 1/3	Exclusion day				

【More than 15 people】One person's accommodation charges ※Supper and breakfast are included.

Calendar	Period	Basic charge	including tax(8%)	Bath tax	Total
4/1 ~ 7/31 (2014)	Man~Thu	9,000yen	720yen	150yen	9,870yen
8/1 ~ 11/30 (2014)	Man~Thu	10,000yen	800yen	150yen	10,950yen
12/1 ~ 12/25 (2014)	Man~Thu	8,000yen	640yen	150yen	8,790yen
1/4 ~ 3/31 (2015)	Man~Thu	8,000yen	640yen	150yen	8,790yen
5/2 ~ 5/5 8/10 ~ 8/17 12/30 ~ 1/3	Exclusion day				

- It is a Two-person use Japanese-style room fee.
- 1,000yen rise on Before Saturday and a Holiday

Guides

- 1905 establishment
- Four storied and reinforced concrete building.
- Air-conditioned, elevator equipped.
- Emergency equipment.
- Capacity 100 guests.
- *1 mat=6ftx3ft.
- Check-in:15:00~ (Latest 21:00)

- Guest room:22 rooms total. Japanese style room 20. Japanese style room 20. Western style room 2. (Restroom in all rooms)
- Bathroom for men and women.
- Banquet hall (100-mat wide with stage)
- Parking lot for 12 buses, 50 cars.)

Only five minutes walk from the shrines and temples of the world heritage.

About 30 minutes by bus for the Lake Chuzenji and Kegon Water Fall.

We started our business as restaurant over 100 years ago.

Since then, we have served beautiful traditional Japanese cuisine with reasonable price for many guests.

Nikko Toshogu



Rinnoji Temple



Futarasan Shrine

